

Revised Geneva Score*

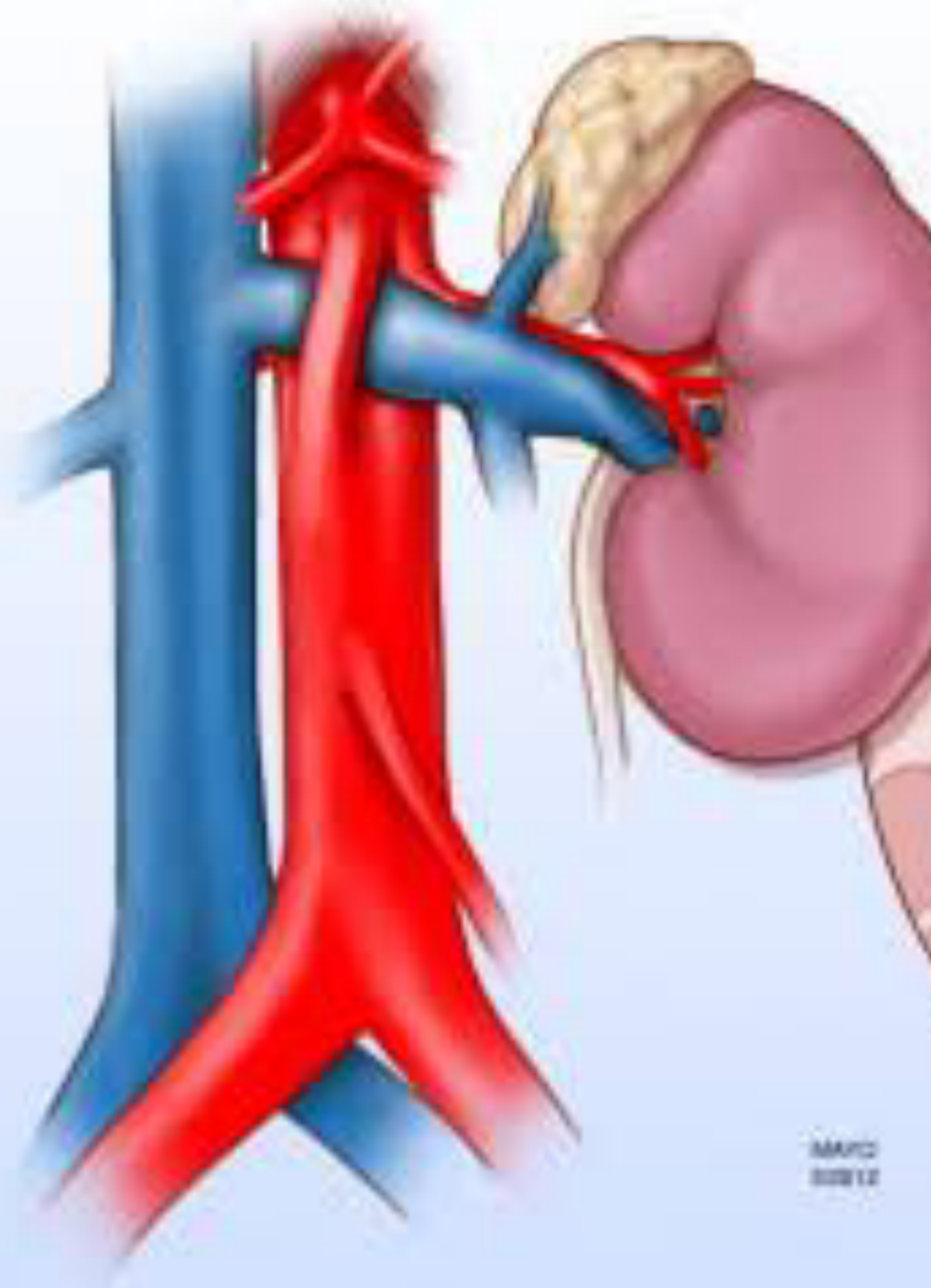
Characteristic	Points
Age older than 65 years	1
Previous deep venous thrombosis or pulmonary embolism	3
Surgery or fracture within 1 month	2
Active malignant condition	2
Unilateral lower limb pain	3
Hemoptysis	2
Heart rate 75–94 beats/minute	3
Heart rate 95 beats/minute or more	5
Pain in response to lower-limb deep venous palpation, unilateral edema	4

0–3 points indicates low clinical probability of pulmonary embolism (8% in the original validation study*)

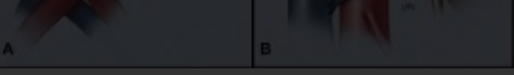
4–10 points indicates intermediate clinical probability of pulmonary embolism (28% in the original validation study*)

≥11 points indicates high clinical probability of pulmonary embolism (74% in the original validation study*)

*Le Gal G. Prediction of pulmonary embolism in the emergency department: The revised Geneva score. *Ann Intern Med* 2006;144:165.

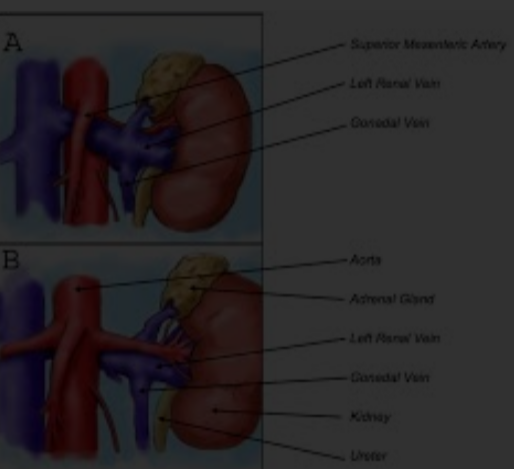


MAPO
2012

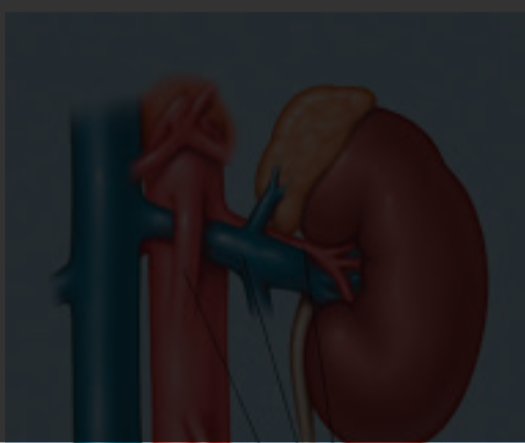


Left renal vein transposition for nutcr...
jvascsurg.org

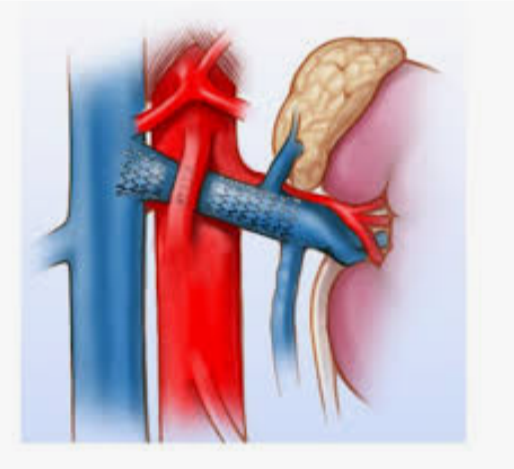
Blog - Nutcracker Syndrome | Milford ...
milfordvascular.com



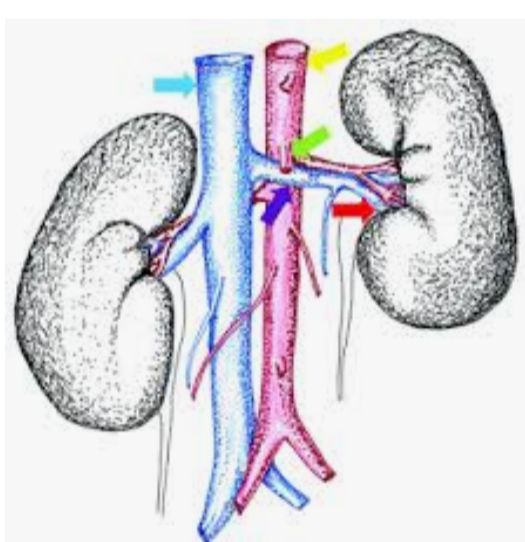
Nutcracker Syndrome (NCS) | NYC S...
nycsurgical.net



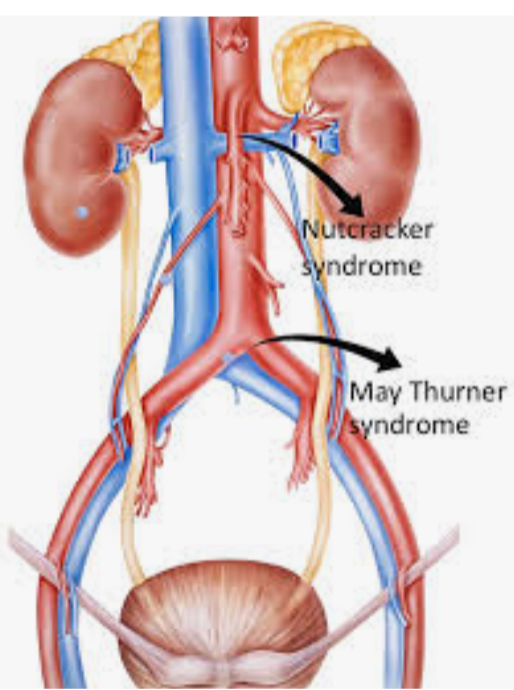
Nutcracker Syndrome - ScienceDirect
sciencedirect.com



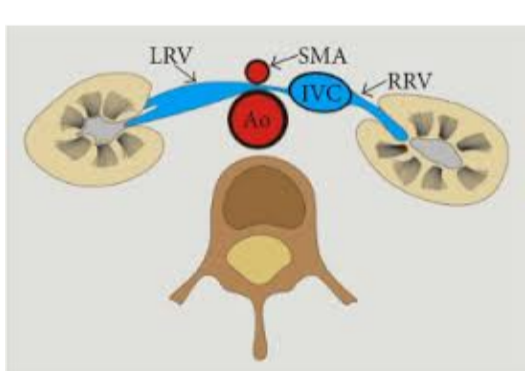
Nutcracker Syndrome - Charlotte, NC...
scgvs.com



16 Nutcracker Syndrome ideas | synd...
pinterest.com



Venous Compression Treatment Adel...
vascularcareadelaide.com.au



What Each Clinical Anatomist Has to ...
hindawi.com

SEE MORE

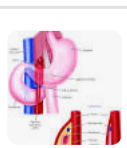
Related searches



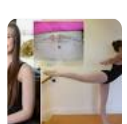
nutcracker syndrome symptoms



ultrasound nutcracker syndrome



nutcracker syndrome duodenum



nutcracker syndrome surgery scar



Send feedback

Get help

Collections